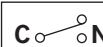


LEXTON SPECIFICATIONS accessories

FS Xlerator Series Accessory **XDF-PS PRESSURE SWITCH** (model: FS751-335)

Specifications

A) Sensing Switch

- 1.0 Mounting: Diaphragm Vertical (see diagram, page 2)
- 2.0 Set Point Range: (Non Adjustable) 0.05± 0.02" w.c Pressure Rise
- 3.0 Measured Media: Air.
- 4.0 Operating Temperature range: -40 to 180F (-40.0 and 82.2C)
- 5.0 Life: 100,000 Cycles Minimum at 1/2 PSI Maximum Pressure Each Cycle and at Maximum Rated Electrical Load.
- 6.0 Electrical Rating @ 60Hz.- Sensing Switch
- 6.1 15A @ 125, 250 or 278 VAC
- 6.2 1/8HP @ 125 VAC, 1/4HP @ 250VAC.
- 7.0 Contact Arrangement: SPNO
- 8.0 Position of Switch Contracts Before Pressure is Applied: 

B) Electrical

- 1.0 Electrical Rating - PC Board.
- 1.1 1VA @ 120 VAC, 50/60 Hz.
- 2.0 Electrical - Contracts.
- 2.1 Terminals 3 & 4, 8A @ 250 VAC, 50/60 Hz.
- 2.2 Terminals 5 & 7, 1A @ 120 VAC, 50/60 Hz.
- 2.3 Srew Connector, Clmap type terminal block. Suitable for 12- 26 AWG
- 3.0 Timing Range.
- 3.1 10 Minutes (600 sec.) ± 10%

C) Operation

- 1.0 Recycling Delay timer with 10min. ON, 60 Sec. OFF Cycle.
- 2.0 Shown in "On Shelf" Condition: No Power and No Differential Pressure Applied
- 3.0 As Diffential Pressure Exceeds Set Point:
the Snap Switch NO Contact Closes,
Signaling the Microp Processor that the air Switch has Changed State
The Microprocessor will energize the Relay and Start Timing Sequence.

NOTE 1 Barbed Sample Line Connector will accept 1.8" I.D. thru 1/4" I.D. flexible plastic tubing.
NOTE 2 Switch Enclosure with strain-releif cable fitting
NOTE 3 Approval or Recognition by: UL File MH6213 and CSA File LR18754. Approval for Electronic Module Pending.

| MODEL | QUANTITY | COMMENTS | PROJECT |
|-------|----------|----------|----------------------|
| | | | <i>location:</i> |
| | | | <i>architect:</i> |
| | | | <i>engineer:</i> |
| | | | <i>contractor:</i> |
| | | | <i>submitted by:</i> |

CERTIFICATIONS



Lexton Industries, Inc.

321 W. 135th St.
Los Angeles, CA 90061

Mailing Address:
664-A Freeman Lane PMB # 308
Grass Valley, CA 95949
phone 323 284 2188 / toll free fax 1 866 281 8605

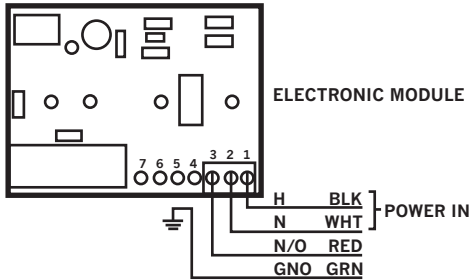
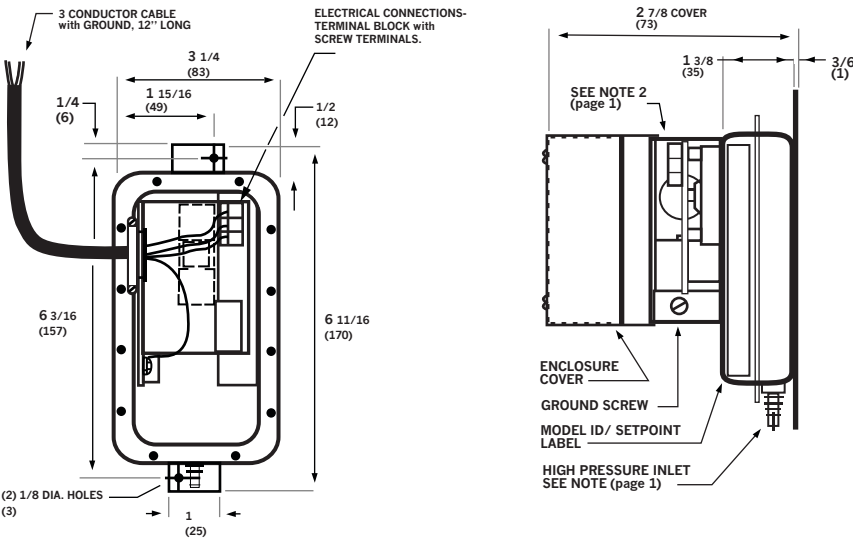


LEXTON SPECIFICATIONS accessories

FS Xlerator Series Accessory XDF-PS PRESSURE SWITCH (model: FS751-335)

Description

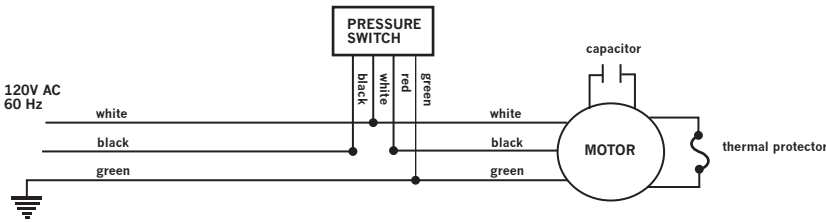
The XDF-PS (FS-751-335) Pressure Switch monitors the clothes dryer operation. The XDF Series Dryer Booster Fan will activate when the dryer begins to operate. The Pressure Switch is preset to cycle at ten minute intervals and the Dryer Booster Fan will continue to operate until the dryer turns off.



Installation

See wiring diagram below. All work must be completed by a licensed, qualified person in accordance to all applicable municipal and federal building codes.

WARNING: As to safety, switch power off at the panel. Sign and secure the electrical panel from inadvertent activation. Turning power ON accidentally could lead to fatal electrical shock to the installer.



CERTIFICATIONS



Lexton Industries, Inc.

321 W. 135th St.
Los Angeles, CA 90061
Mailing Address:
664-A Freeman Lane PMB # 308
Grass Valley, CA 95949
phone 323 284 2188 / toll free fax 1 866 281 8605

